

Item No.	7c
Date of Meeting	July 28, 2020

# Port Economic Development Partnership Program Helps Drive Economic Recovery



# Port Recovery Policy Accelerates Changes to ED Partnership Grant Program

- Port Commission's Recovery Resolution drove staff to provide recommendations and options for Port investments to support recovery:
  - **Prioritize** Economic Development and Community Investment **Programs**
  - **Maximize Partnerships to Leverage Funding** and Impact
- In response to the Recovery resolution Economic Development staff worked with Cities to review and pivot the Port's economic development partnership grant program



# Economic Development Partnership Grant Program

- Port funded grant program for King County cities designed to advance local and regional economic development
- **\$960,000 annual funding** (from the property tax levy)
- Awards are **capped at \$65,000** with a minimum of **\$5,000 for small cities**.
- **A 50% local match** (with up to 25% in-kind resources allowed) **is required**.

## Eligible Activities

- Business attraction** initiatives
- Small business assistance;**
- Industry retention** and expansion assistance
- Tourism development;**
- Downtown revitalization;**
- Commercial or industrial property development;** and
- Other community or economic development projects**

# Leveraging Grants and Partnerships

As the pandemic unfolded in March staff started working with city grant partners to pivot projects towards “relief and recovery”

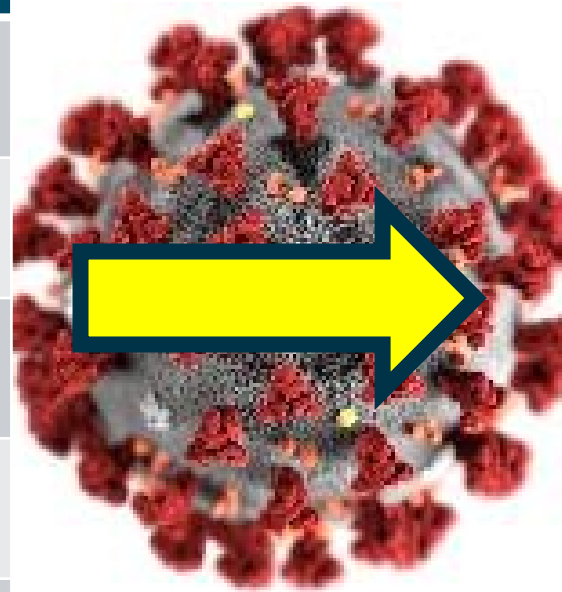


- **Many cities were already pivoting** to address pandemic issues in their communities (ex. Small business closures)
- Ad hoc **City advisory group helped evaluate program and recommend changes** for 2021 (if authorized)
  - Range of **eligible activities narrowed** based on new economic challenges and realities
- **Realigned partnerships** are supporting new economic development priorities that **address pandemic related challenges**

# Shift to COVID Relief and Recovery

## 2019 Priority Initiatives

1. Business Recruitment
2. Business Assistance and Retention
3. Planning and Feasibility Study
4. Tourism
5. Buy Local Campaigns and Marketplace Development



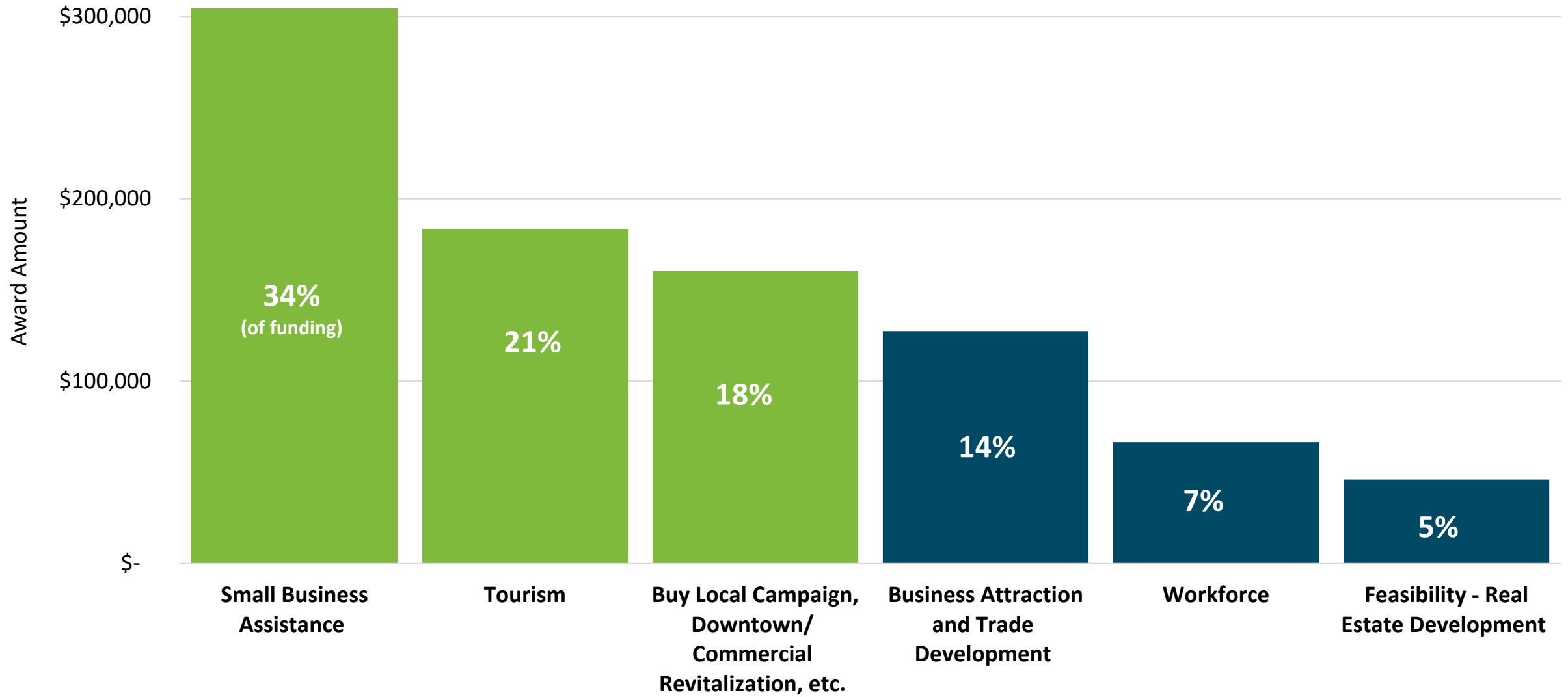
## Current COVID-driven Initiatives

1. **Small Business Assistance**
2. **Tourism**
3. **Placemaking**
4. Feasibility - Real Estate Development
5. Workforce

# Examples of City Pivots

Before	After
<b>Kent</b> workforce partnership with Aerospace Joint Apprenticeship Council	<b>Pivoted to address retraining needs for dislocated workers.</b>
Five Cities supported <b>Startup 425</b> program...	<b>Launched the (Re)Startup 425 website</b> with webinars, etc.
<b>Enumclaw</b> planned to do <b>hotel feasibility study</b> ...	<b>Shifted funding to Enumclaw Chamber business outreach</b>
<b>Burien</b> planned to <b>attract new business</b> to the City...	<b>Pivoted to a regional tourism</b> promotion campaign.
<b>Shoreline</b> planned to promote local film artists at the Holly Shorts Festival	<b>Started a drive-in “Washington Made Short” film series</b>
<b>Woodinville</b> planned to host a commercial real estate tour...	<b>Created an online business resource hub</b> with Chamber

# 2020 Top New Focus Areas



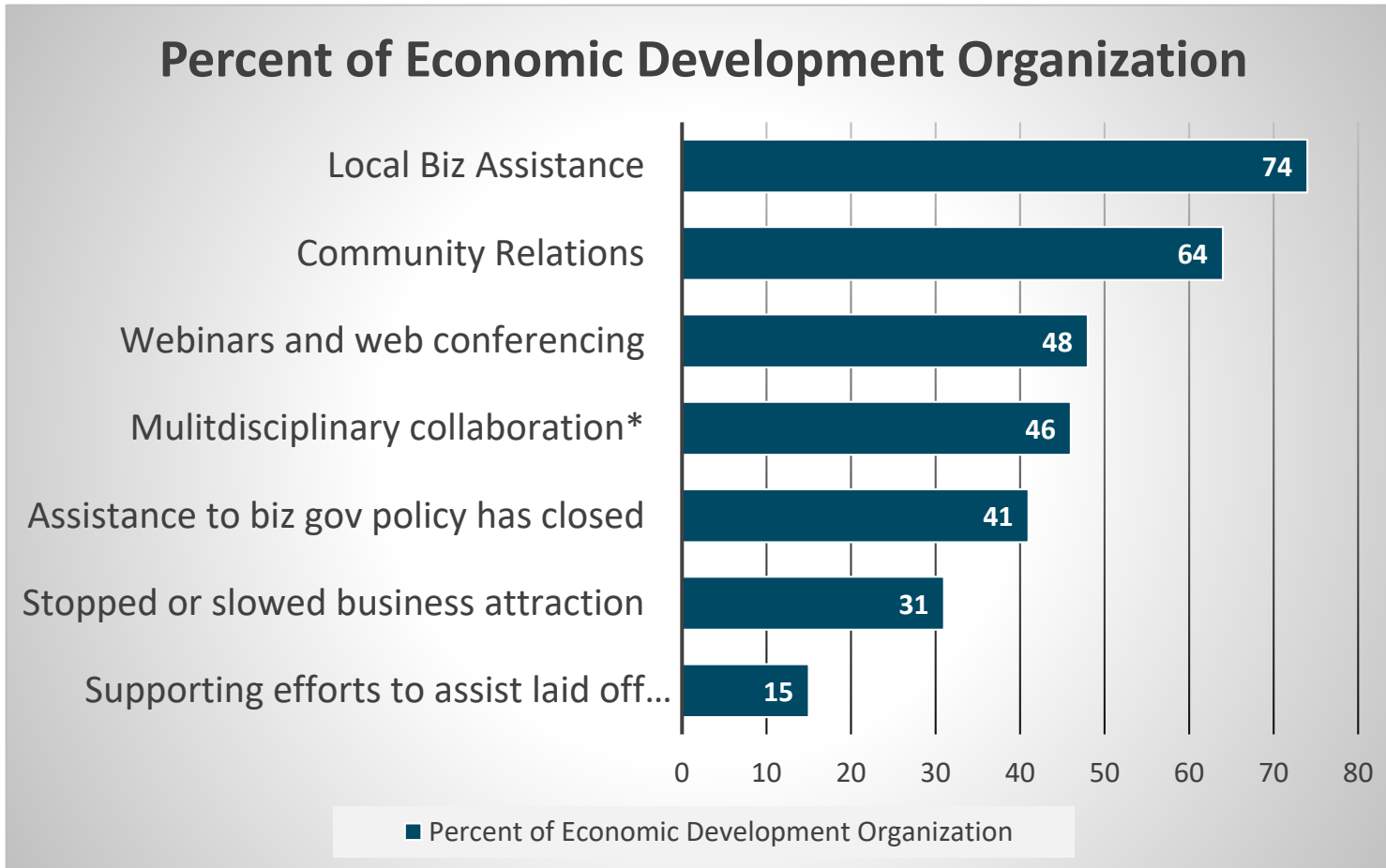
# Refocusing Partnership Program Based on New COVID Realities

- Completed SWOT of King County's COVID-19 economy
- Discussed and established priority activities
- Discussed several program funding scenarios
  - Increased funding
  - Decreased funding
- Discussed how to promote collaboration and regional or countywide projects

<b>City Advisory Panel</b>	
<b>Bre Keveren</b>	North Bend
<b>Doug Lein</b>	Auburn
<b>Ellen Miller-Wolfe</b>	Kirkland
<b>Philly Marsh</b>	Bellevue
<b>Tanja Carter</b>	SeaTac
<b>Tim Morgan</b>	Maple Valley
<b>Eric Lane</b>	Des Moines



# Economic Development is Shifting In Response to COVID



- Local businesses assistance is top priority
- Virtual Services: Practitioners using webinars and other tools to provide help (ex. CARES loans)
- Multidisciplinary collaboration more important than ever before (esp. with health officials)
- Many organizations no longer doing business recruitment

\*Multidisciplinary collaboration includes working with public health, city planning, workforce development and other partners to coordinate relief and recovery efforts

# 2021 Program Recommendations

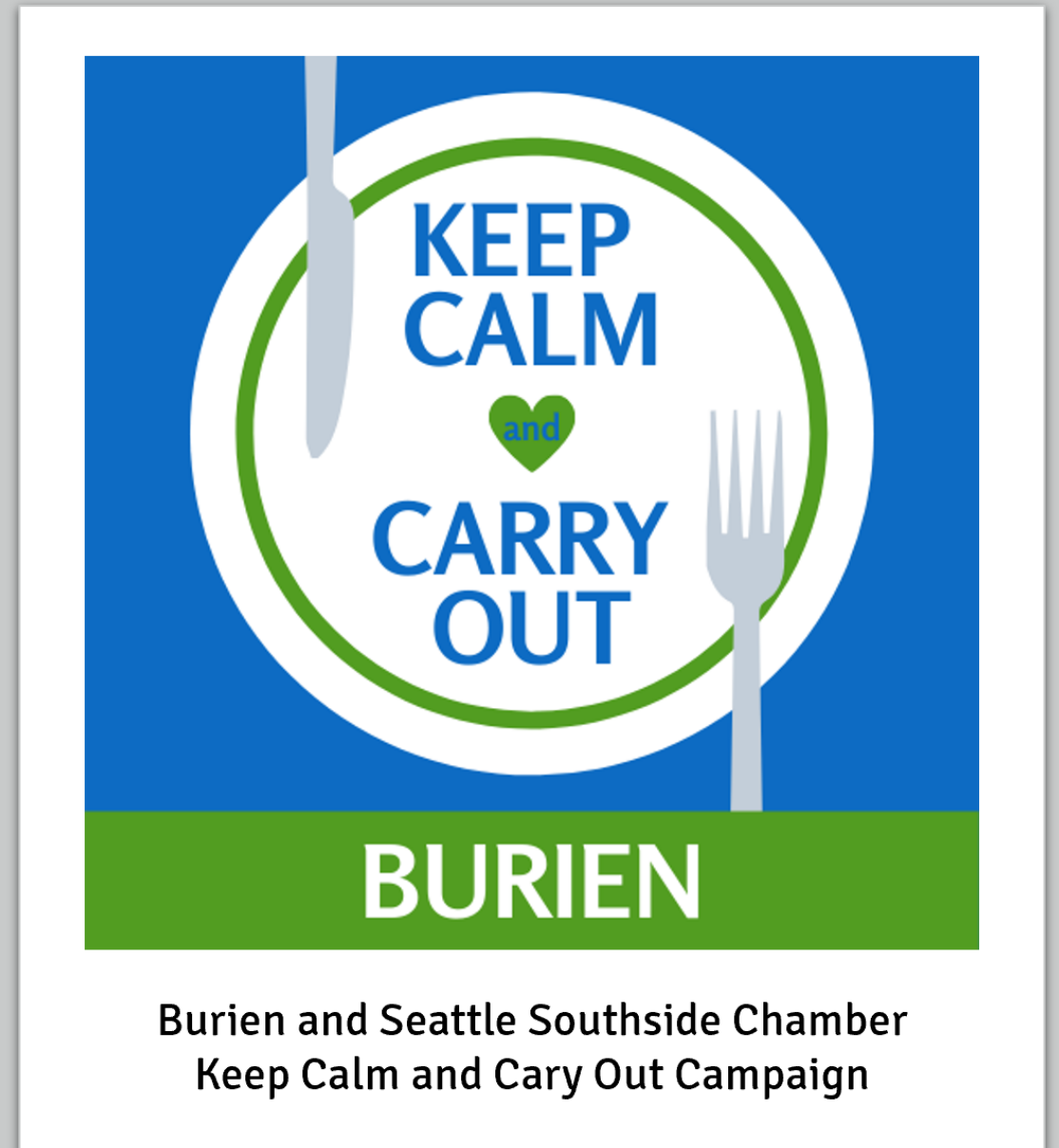
## Narrow Eligible Activities

- Small business assistance (resiliency and reopening)
- Tourism development and local/regional placemaking
- International trade development\*
- Other projects like workforce development and feasibility studies\*

## Ineligible for 2021:

- Business attraction initiatives
- Community branding or placemaking initiatives that are not tied to reopening and recovery

\*requires preapplication consultation with staff



# Appendix

# 2020 Program Grant Award Eligible Amounts

Algona	\$ 5,000
Auburn (part)	\$ 65,000
Beaux Arts Village	\$ 5,000
Bellevue	\$ 65,000
Black Diamond	\$ 5,000
Bothell (part)	\$ 28,570
Burien	\$ 52,000
Carnation	\$ 5,000
Clyde Hill	\$ 5,000
Covington	\$ 20,280
Des Moines	\$ 31,580
Duvall	\$ 7,840
Enumclaw (part)	\$ 12,200

Federal Way	\$ 65,000
Hunts Point	\$ 5,000
Issaquah	\$ 37,590
Kenmore	\$ 22,320
Kent	\$ 65,000
Kirkland	\$ 65,000
Lake Forest Park	\$ 13,250
Maple Valley	\$ 26,180
Medina	\$ 5,000
Mercer Island	\$ 24,470
Milton (part)	\$ 5,000
Newcastle	\$ 12,450
Normandy Park	\$ 6,610

North Bend	\$ 6,965
Pacific (part)	\$ 6,875
Redmond	\$ 65,000
Renton	\$ 65,000
Sammamish	\$ 64,410
SeaTac	\$ 29,180
Shoreline	\$ 56,370
Skykomish	\$ 5,000
Snoqualmie	\$ 13,670
Tukwila	\$ 20,930
Woodinville	\$ 12,410
Yarrow Point	\$ 5,000
<b>Total Eligible Funding</b>	<b>\$ 1,011,150</b>

# Investments Since Program Start (2016 - 2020)

## North King County

- Port: \$ 0.2 M
- City + Port: \$ 0.5 M

## East King County

- Port: \$1.3 M
- City + Port: \$2.2 M



## South King County

- Port: \$1.7 M
- City + Port: \$2.9 M

\$3.3 million invested in King County - Combined investment (Cities + Port) of \$5.6 million

# 2019 Program Summary

- POS Funds Used = **\$740,000**
- City Match Funds = **\$452,000**
- 23 cities participated in 2019
- Non-participants reasons:
  - Changes in city leadership, limited city funds, limited staff capacity, finishing 2018 projects
- So far 31 cities participating in 2020

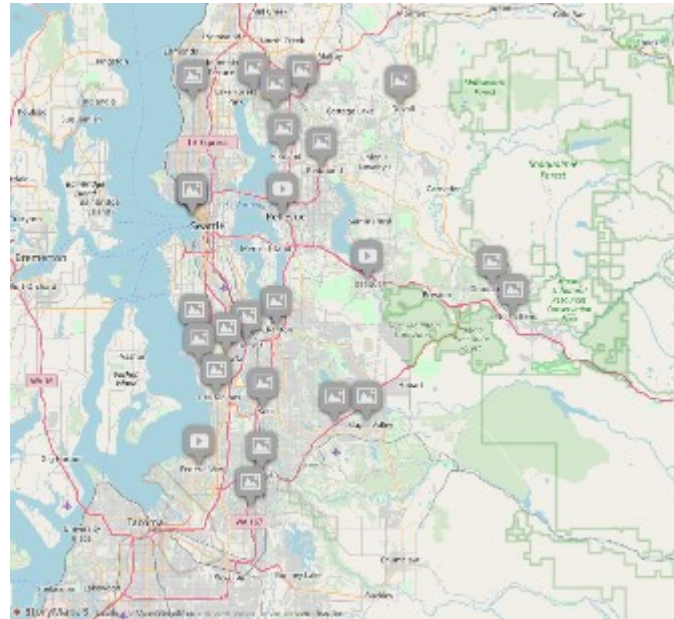


Downtown Renton summer event supported by grant



# 2019 Program Highlights

## View the StoryMap



### 2019 GROWING THE REGIONAL ECONOMY

The Port of Seattle's Economic Development Partnership program is an annual, cooperative economic development program to help fund local economic development initiatives across King County. Since the program's inception in 2016, the Port has awarded over \$5.3 million in program funding to King County cities. When combined with the project investments from each city, the program has funded \$5.7 million in economic development projects across King County.

Explore the results of the 2019 Growing the Regional Economy by clicking on the arrow on the right side of the map screen.

[Start Exploring](#)